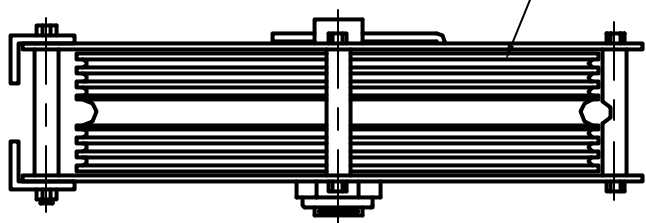


16" DIA CAST IRON SHEAVE GROOVED  
FOR 1-LINE OF 3/4" ROPE &  
8-LINES OF 1/4" CABLE



VIEW TOWARDS AUDIENCE

**16" DIA HEADBLOCK**

1/4 SCALE

SHOWN WITH THE PROPER HORIZONTAL RELATIONSHIP  
BETWEEN THE HEADBLOCK AND THE T-BAR