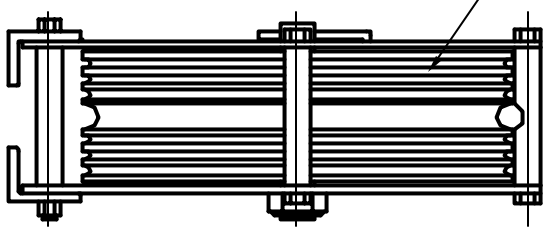


12" DIA CAST IRON SHEAVE GROOVED FOR 1-LINE  
OF 3/4" ROPE & 6-LINES OF 1/4" CABLE



**12" DIA 6-LINE HEADBLOCK**

1/4 SCALE

VIEW TOWARDS AUDIENCE  
SHOWN WITH THE PROPER HORIZONTAL RELATIONSHIP  
BETWEEN THE HEADBLOCK AND THE T-BAR

X'-X'  
N.T.S.

8"