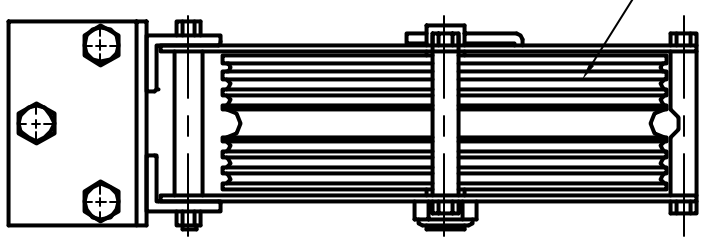


12" DIA. CAST IRON SHEAVE GROOVED  
FOR 1-LINE OF 3/4" ROPE &  
6-LINES OF 1/4" CABLE



**12" DIA HEADBLOCK**

1/4 SCALE

VIEW TOWARDS AUDIENCE  
SHOWN WITH THE PROPER HORIZONTAL RELATIONSHIP  
BETWEEN THE HEADBLOCK AND THE T-BAR