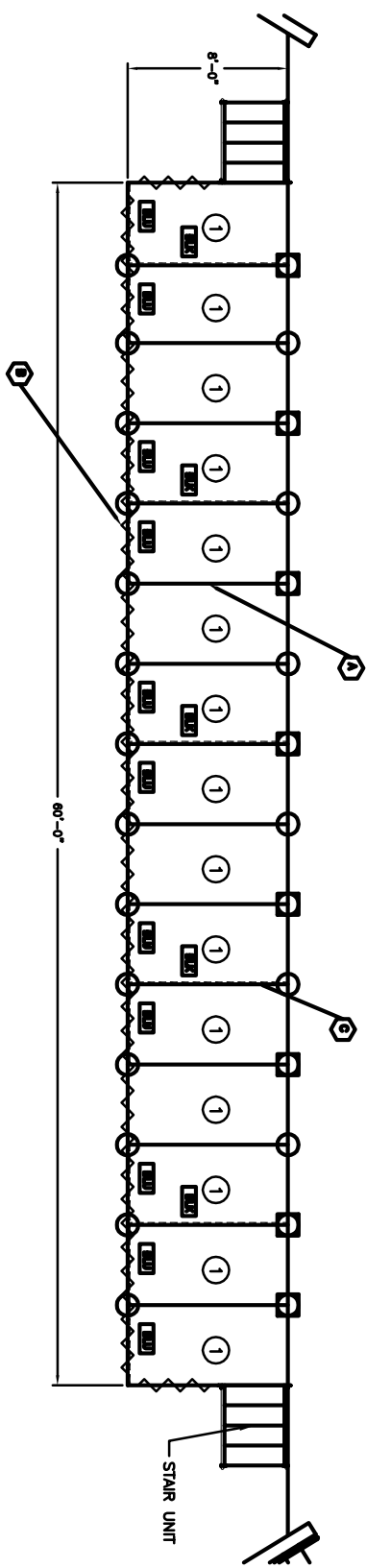
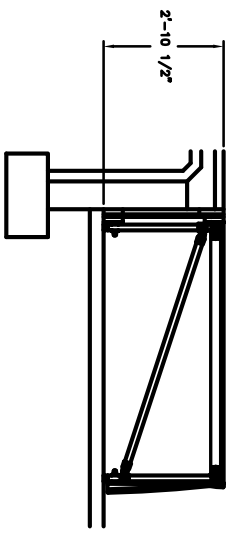


STAGE EXTENSION PLAN KEYNOTE LEGEND:

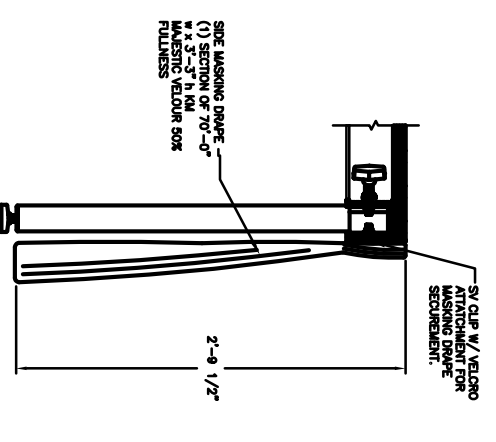
- Ⓐ DENOTES LINE OF 5'-100 PLATFORMS REFER TO 1/2" PT FOR ABOVE INFO
- Ⓑ CLOSURE CURTAIN LOCATIONS
- Ⓒ CROSS BRACE LOCATIONS
- Ⓓ DECK #
- 2-LEG CLAMP LOCATION QTY (28)
- STAGE TIE-IN LOCATION (8)
- DENOTES COLOR OF TAPE MARKING
- CROSS BRACE LOCATIONS



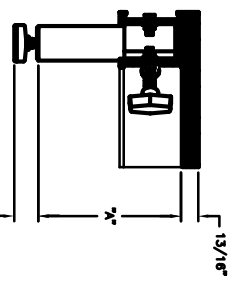
1 PORTABLE STAGE PLAN VIEW
1/8"=1'-0"



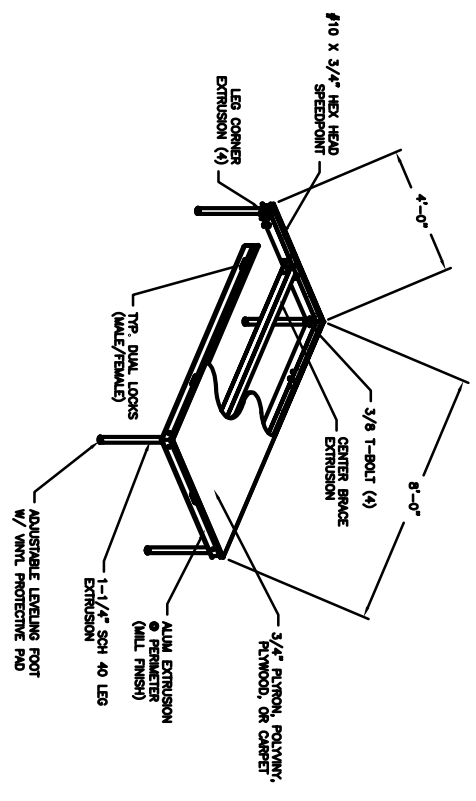
2 PORTABLE STAGE SECTION VIEW



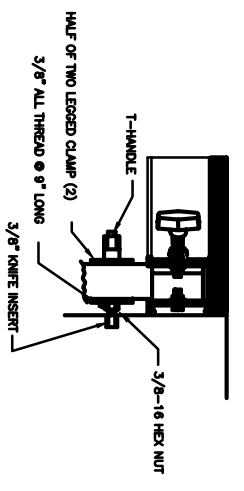
3 MASKING CURTAIN



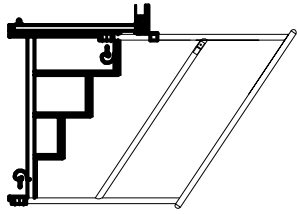
4 LEG SCHEDULE



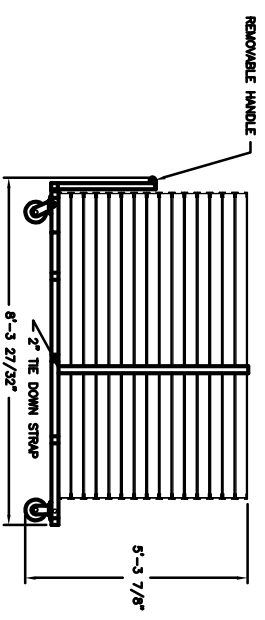
5 STAGE 100 TYP DETAIL



8 STAGE TIE-IN



7 4-STEP STAIR UNIT



9 15 DECK STORAGE CART

SCALE	DRAWN	CHECKED	DATE
SHEET TITLE			

JOB TITLE	ARCHITECT
LOCATION	ENGINEER
DWG. FILE	CONSULTANT
	CONTRACTOR

REV.	DESCRIPTION	REV. BY	DATE

STAGE EXTENSION PLAN AND DETAILS

The Stage Equipment Company

 Minneapolis, MN

 (763) 506-8800

1